

# Ceiling Mounted Systems

FDEVA

Mitsubishi Heavy Industries has further extended its development in world leading technology applied to high efficiency air conditioning and heat pump systems

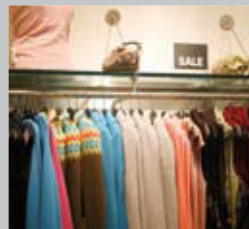
## FDEVA Ceiling Mounted Systems

Cooling Range: 4.7 - 14.5kW

Heating Range: 6.3 - 16.5kW



Air conditioners and heat pumps for commercial and residential applications



OFFICES • SHOPS • RETAIL STORES • RESTAURANTS • HOTELS • GYMS • MEETING ROOMS



The ADVANCED FDEVA Ceiling Mounted System range is a high specification product, with energy saving INVERTER technology, extended pipe runs and sophisticated operation and service control functions. It is ideal for rooms that do not have a ceiling void for other types of air conditioner.

- 7-Day/24-hr Programmable Timer - included in standard wired controller
- Mitsubishi INVERTER Scroll Compressors are used throughout the range
- Significant savings in running costs
- Up to 50m pipe runs
- Compact Outdoor Units have now been introduced, with lower sound levels and smaller physical size, ideal for installation in restricted locations

# Ceiling Mounted Systems

FDEVA

## Key Features

- 7-Day Programmable Timer
- Two on/off settings each day
- Different temperatures for each set period
- External timer/BMS switching for Group (up to 16 units)
- Wall Controller - hard wired
- Integral temperature sensor
- Infra-red wireless controller optional
- INVERTER technology on all models
- Low profile attractive white unit casing
- Improved air discharge louvre
- Low ambient control included
- Auto re-start after power interruption
- Reduced sound levels
- Compatible with Multi Systems
- Pre-charged for 30m of pipework



RCE1 Wired Controller



Optional 'Wireless' Controller

Energy Saving up to **38%** with INVERTER Technology

## Superior Controls Specification

The Mitsubishi RCE1 remote controller combines all the basic user requirements - temperature setting, fan speed selection, mode and timer settings, with a comprehensive range of service data functions, inverter compressor speed indication, fault diagnosis and operational history.

Infra-red wireless controller is available as an option. (Limited control function)

## Ceiling Suspended indoor unit

Now has stylish rounded side panels, and a slimmer profile - only 210mm on smaller models. The FDEVA can be installed adjacent to a side wall, allowing the pipe connections and electrical wiring to be concealed.

## INVERTER technology

INVERTER systems constantly adjust the cooling/heating output, dependent on the varying room requirement, providing consistent and comfortable temperature control and lower energy costs.

		CEILING MOUNTED						
		FDEVA 151 HEN	FDEVA 201 HEN	FDEVA 251 HEN	FDEVA 302 HEN	FDEVA 402 HEN	FDEVA 502 HEN	FDEVA 602 HEN
Power source		1 ph	1 ph	1 ph	1 ph	1 ph*	1 ph*	1 ph*
COOLING (nominal) range	kW	1.8 to 4.7	2.2 to 5.6	2.8 to 6.3	3.5 to 8.0	6.1 to 11.2	6.54 to 14.0	6.7 to 14.5
UK Cooling (max)	kW	4.56	5.43	6.11	7.68	10.36	12.95	13.41
Energy label in cooling		A	A	A	A	A	C	C
HEATING (nominal) range	kW	2.0 to 5.4	2.5 to 6.3	3.1 to 7.1	4.0 to 9.0	5.9 to 12.5	6.2 to 16.0	6.3 to 16.5
C.O.P.		3.41	3.44	3.58	3.62	3.77	3.54	3.41
Energy label in heating		B	B	B	A	A	B	B
INDOOR UNIT H x W x D	unit (mm)	210 x 1070 x 690	210 x 1070 x 690	210 x 1320 x 690	210 x 1320 x 690	250 x 1620 x 690	250 x 1620 x 690	250 x 1620 x 690
Net weight	kg	30	30	36	36	46	46	46
OUTDOOR UNIT H x W x D	unit (mm)	595 x 847 x 290	595 x 847 x 290	595 x 847 x 290	750 x 968 x 340	845 x 970 x 370	845 x 970 x 370	845 x 970 x 370
Net weight	kg	40	40	40	60	63	63	63
Power Source Rating MCB	A	16A	16A	16A	16A	20A	25A	30A
Ref. max piping length	m	40	40	40	50	50	50	50

Cooling Nom: 27°Cdb/19°Cwb, Amb: 35°C UK Cooling: I/d: 23°Cdb/16°Cwb, Amb: 30°C Heating: I/d: 20°Cdb, Amb: 7°Cdb/6°Cwb

\*3PH UNITS ALSO AVAILABLE 402, 502 & 602

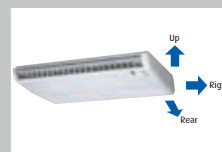
## FD-A Series Top Specification High Performance Systems



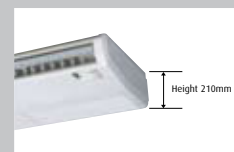
New compact outdoor units (single fan) up to 14/16kW



INVERTER Multi Systems up to 25/28kW



Pipe connection from bottom, top or rear



Reduced height 210mm on smaller models

Technical features & Accessories