

# Cassette Recessed Systems

FDTVCVA/FDTVA

Mitsubishi Heavy Industries has further extended its development in world leading technology applied to high efficiency air conditioning and heat pump systems

## CASSETTE - AVAILABLE IN 2 VARIANTS

### FDTVCVA Compact Cassette

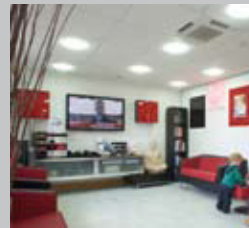
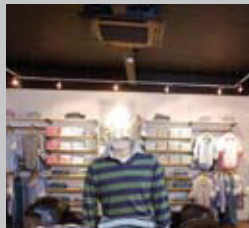
600x600 ceiling recessed unit designed to fit standard ceiling grids - up to 5.6kW

### FDTVA Standard Cassette

Standard ceiling recessed unit - full range up to 14.8kW



Air conditioners and heat pumps for commercial and residential applications



OFFICES • SHOPS • RETAIL STORES • RESTAURANTS • HOTELS • GYMS • MEETING ROOMS



- Up to 38% energy saving using Mitsubishi INVERTER technology as standard
- Provides variable capacity control, determined by the cooling or heating requirement of the conditioned space
- Significant savings in running costs
- Up to 50m pipe runs
- Sophisticated operation and service control functions
- 7-Day/24-hr Programmable Timer - included in standard wired controller
- Compact Outdoor Units are available with lower sound levels and smaller physical size - ideal for installation in restricted locations

# Cassette Recessed Systems

FDTCV A/FDTVA

## Key Features

- 7-Day Programmable Timer
- Two on/off settings each day
- Different temperatures for each set period
- External timer/BMS switching for Group (up to 16 units)
- Wall Controller - hard wired
- Integral temperature sensor
- Infra-red wireless controller optional
- INVERTER technology on all models
- Low profile attractive grey/white fascia panel
- Improved anti-smudge air discharge
- Low ambient control included
- Auto re-start after power interruption
- Reduced sound levels
- Compatible with Multi Systems up to 28kW cooling



RCE1 Wired Controller



Optional 'Wireless' Controller

Energy Saving up to **38%** with INVERTER Technology

## Superior Controls Specification

The Mitsubishi RCE1 remote controller combines all the basic user requirements - temperature setting, fan speed selection, mode and timer settings, with a comprehensive range of service data functions, inverter compressor speed indication, fault diagnosis and operational history.

Infra-red wireless controller is available as an option. (Limited control function)

## New Cassette Design

Significantly lower sound levels are achieved by improved air flow pattern through the unit, combined with a high performance heat exchanger. This results in a pressure loss reduction allowing optimised fan performance.

## INVERTER technology

INVERTER systems constantly adjust the cooling/heating output, dependent on the varying room requirement, providing consistent and comfortable temperature control and lower energy costs.

		COMPACT CASSETTE		STANDARD CASSETTE						
		FDTCV A 151 HEN	FDTCV A 201 HEN	FDTVA 151 HEN	FDTVA 201 HEN	FDTVA 251 HEN	FDTVA 302 HEN	FDTVA 402 HEN	FDTVA 502 HEN	FDTVA 602 HEN
Power source		1 ph	1 ph	1 ph	1 ph	1 ph	1 ph	1 ph*	1 ph*	1 ph*
COOLING (nominal) range	kW	1.8 to 4.7	2.2 to 5.6	1.8 to 4.7	2.2 to 5.6	2.8 to 6.3	3.9 to 8.0	6.1 to 11.2	6.54 to 14.0	6.7 to 14.8
UK Cooling (max)	kW	4.56	5.43	4.56	5.43	6.11	7.68	10.36	12.95	13.69
Energy label in cooling	A	A	B	A	A	A	A	B	B	B
HEATING (nominal) range	kW	2.0 to 5.4	2.5 to 6.3	2.0 to 5.4	2.5 to 6.3	3.1 to 7.1	4.0 to 9.0	5.6 to 12.5	6.2 to 16.0	6.3 to 16.8
C.O.P.		3.75	3.53	3.41	3.62	3.76	3.72	3.59	3.53	3.52
Energy label in heating	A	A	B	B	A	A	A	B	B	B
INDOOR UNIT H x W x D	unit (mm)	248 x 570 x 570	248 x 570 x 570	270 x 840 x 840	270 x 840 x 840	270 x 840 x 840	270 x 840 x 840	295 x 840 x 840	365 x 840 x 840	365 x 840 x 840
	panel (mm)	35 x 700 x 700	35 x 700 x 700	35 x 950 x 950	35 x 950 x 950	35 x 950 x 950	35 x 950 x 950	35 x 950 x 950	35 x 950 x 950	35 x 950 x 950
Net weight	kg	16+3.5	16+3.5	24+8	24+8	24+8	24+8	26+8	31+8	31+8
OUTDOOR UNIT H x W x D	mm	595 x 847 x 290	595 x 847 x 290	595 x 847 x 290	595 x 847 x 290	595 x 847 x 290	750 x 968 x 340	845 x 970 x 370	845 x 970 x 370	845 x 970 x 370
Net weight	kg	40	40	40	40	40	60	63	63	63
Power Source Rating MCB	A	16A	16A	16A	16A	16A	16A	20A	25A	30A
Ref. max piping length	m	40	40	40	40	40	50	50	50	50

Cooling Nom: 27°Cdb/19°Cwb, Amb: 35°C UK Cooling: I/d: 23°Cdb/16°Cwb, Amb: 30°C Heating: I/d: 20°Cdb, Amb: 7°Cdb/6°Cwb

\*3PH UNITS ALSO AVAILABLE 402, 502 & 602

## FD-A Series Top Specification High Performance Systems

Technical features & Accessories



Space Collar (option) for restricted ceiling voids



Installation final height adjustment to ceiling grid



New compact outdoor units (single fan) up to 14/16kW



Inverter Multi Systems up to 25/28kW